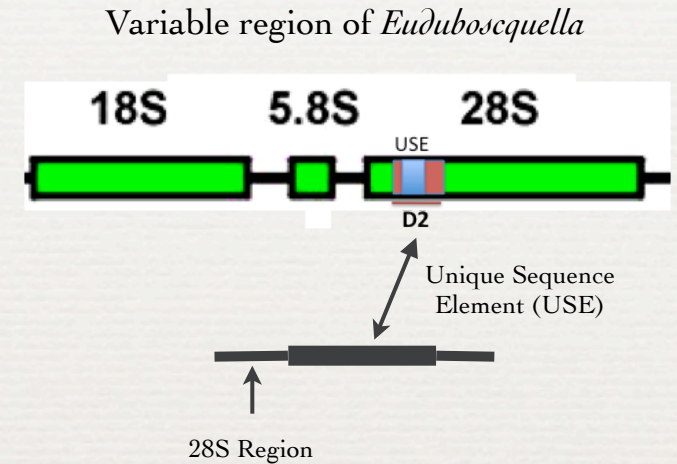
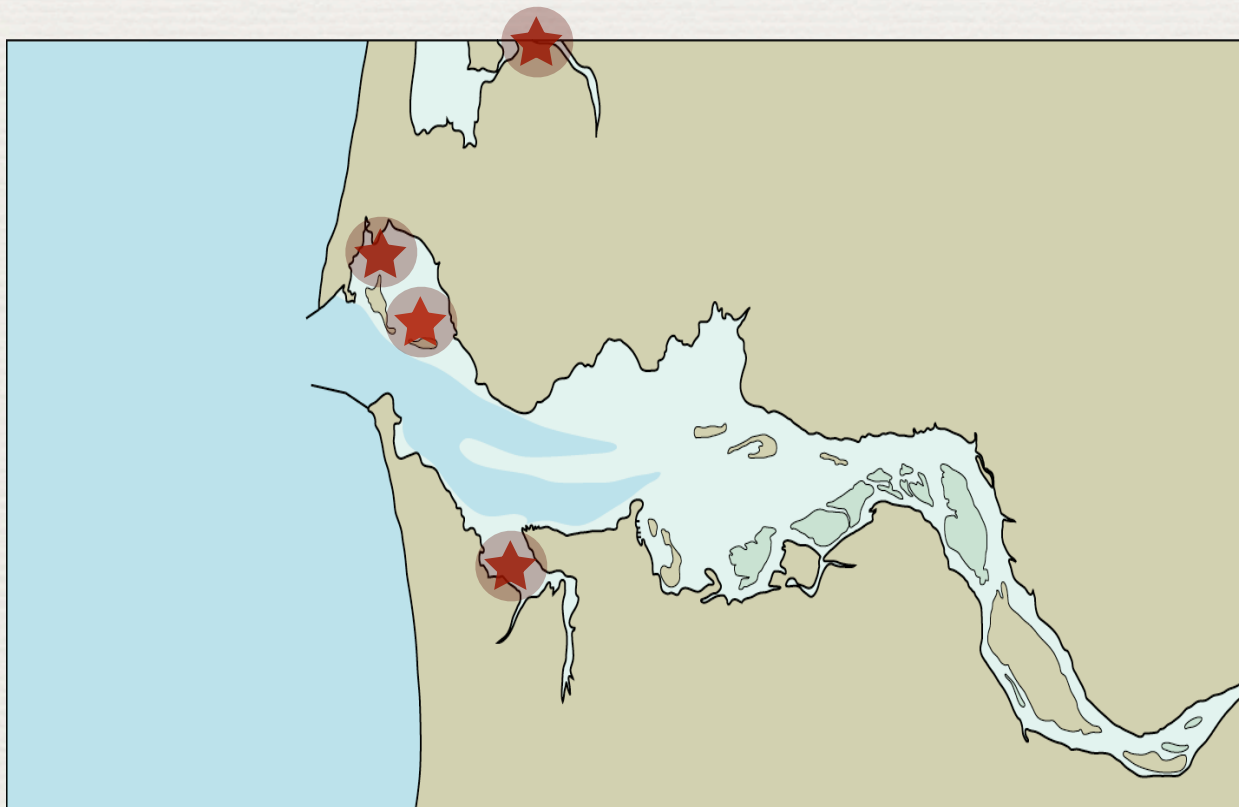


Dinoflagellates and Red
Water: What species are
associated with *M. rubrum*?

Deirdre McAteer, Pete Kahn (mentor), Peter Zuber (PI)
10 July 2013

Euduboscquella associated with *M. rubrum*

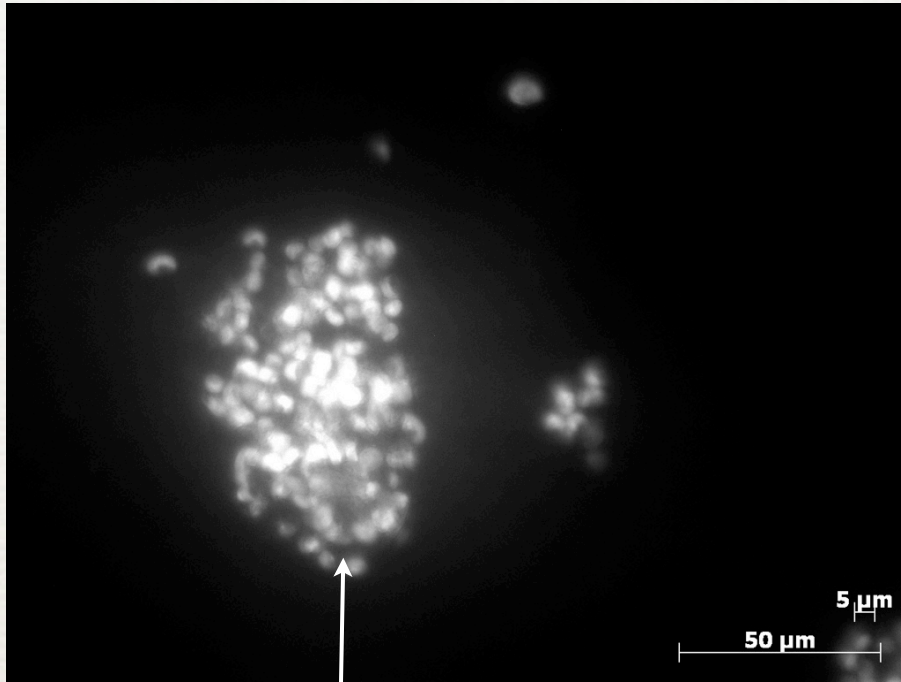
- ◆ *Euduboscquella* is a parasitic dinoflagellate found to infect ciliates
- ◆ *Euduboscquella* seems to be associated with red water (see map)



MAP KEY

- ★ : Sites where *E.* has been found during Red Water
- : Bloom locations (Willapa Bay, Ilwaco Harbor, Bakers Bay, and Youngs Bay)

Proflavine staining of cells from Willapa (9 May 13)



stain *E. coli* infection of tintinnid ciliate (Cy3 filter, shows probe)

stain showing *E. coli* infection of tintinnid ciliate (FITC filter, shows Proflavine)

