

Tracking Biological Particles using Elcirc

John Morrison

Cliff Robinson

Mike Foreman

Particle Types

■ Passive

- Massless Tracers (virtual particles)
- Sediment (density & size)

■ Biological

- Benthic – move relative to bottom
- Pelagic – move relative to surface
- Vertical migrators – diurnal migration
- Passive

Biological Behaviors

- Benthic, Pelagic & Passive
 - Seeding location constraints
 - Location
 - Depth
 - Seeding depth

Biological Behaviors

- Vertical Migrators
 - Seeding location constraints
 - Location
 - Depth
 - Migration Characteristics
 - Upper and lower depth limits
 - Ascent – descent rates
 - Ascent – descent times
 - Implementation
 - Time of day target depths
 - Linear interpolation between targets

Biological Behaviors

- Seeding Conditions
 - Time of Year
 - Background condtions
 - Temperature and Salinity
 - Atmospheric forcing
 - Wind
 - Tide State
 - Spring – Neap
 - Ebb – Flood
 - Geophysical
 - Water depth
 - Bottom type
 - Exposure

Biological Behaviors

- Life stage behavior (abalone)
 - Egg – passive
 - Larva – active (e.g.. Settle in appropriate environment)
 - Mortality (10 – 14 days)

Particle Movement

- Velocity interpolated from Velocity Field
- ΔV_t w.r.t Time
 - Change in velocity at current location
- ΔV_p w.r.t Position
 - Change in velocity between positions at t and $t+1/2$
- $$P_{t+1} = P_t + (V_t + \Delta V_t + \Delta V_p)t$$

Particle Trajectory Testing

- Against constant velocity fields
 - Call field generator before particle tracking to regenerate field
 - Rotation
 - Translation
 - Can test against post processor streamlines

Seeding Strategies

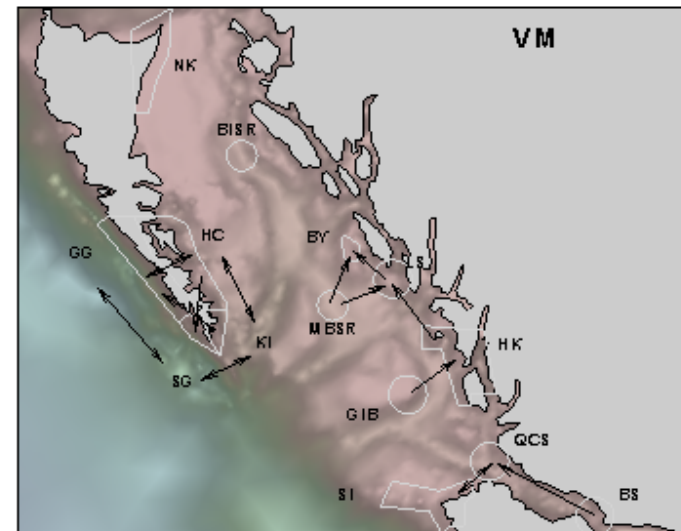
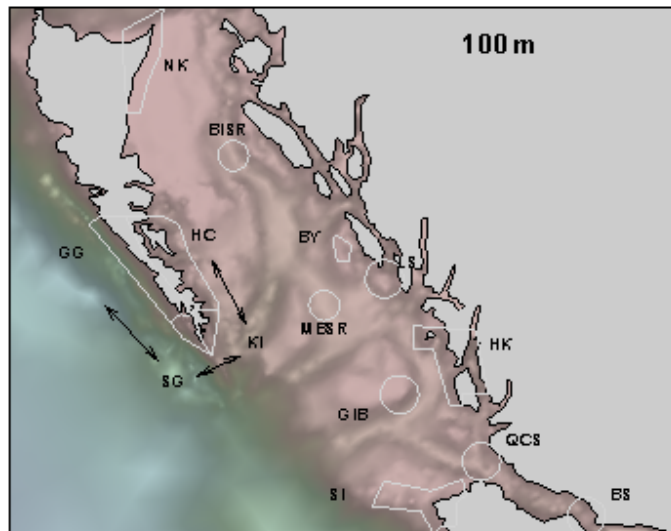
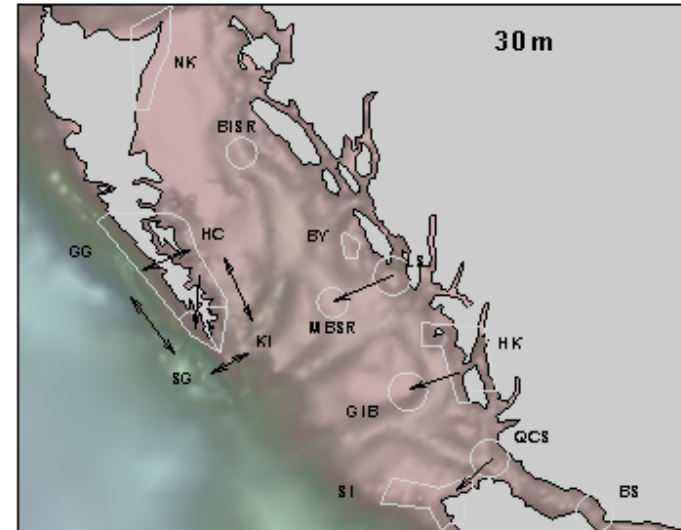
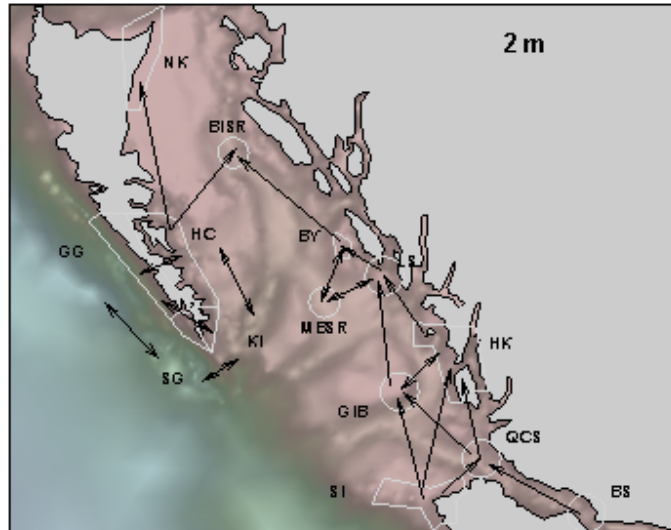
- Large number of particles (5000)
 - Multiple insertion times
 - Different wind tide combinations
 - Grid within Area of Interest
 - Difficult to control No. of particles that pass all seeding criteria (eg max depth)
 - Random within Area of Interest
 - Exact no. of particles
 - Distribution may be uneven

Analysis

- Connectivity matrix
 - Count of particle originating in one area and terminating in another
- Track metrics for each particle
 - Distance traveled on path
 - Distance origin to termination
 - Average velocity
 - Duration

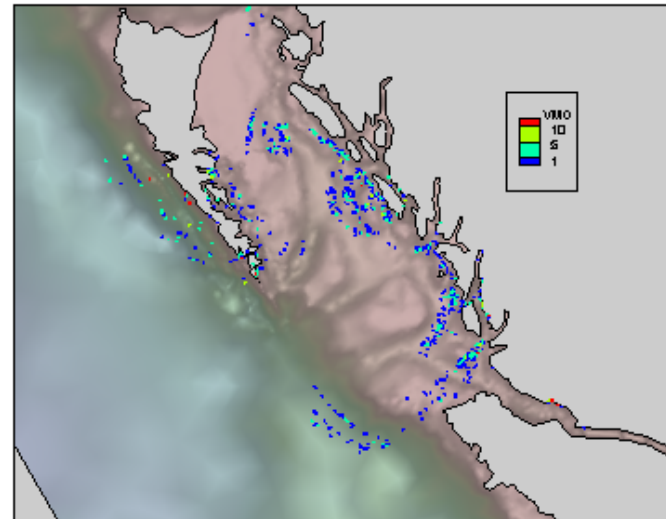
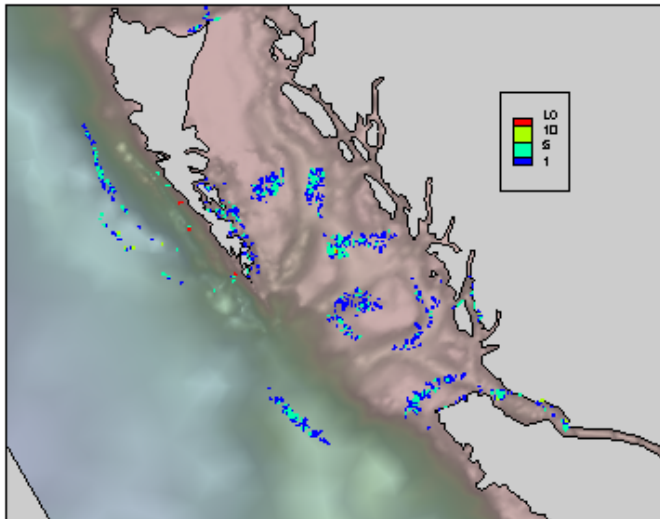
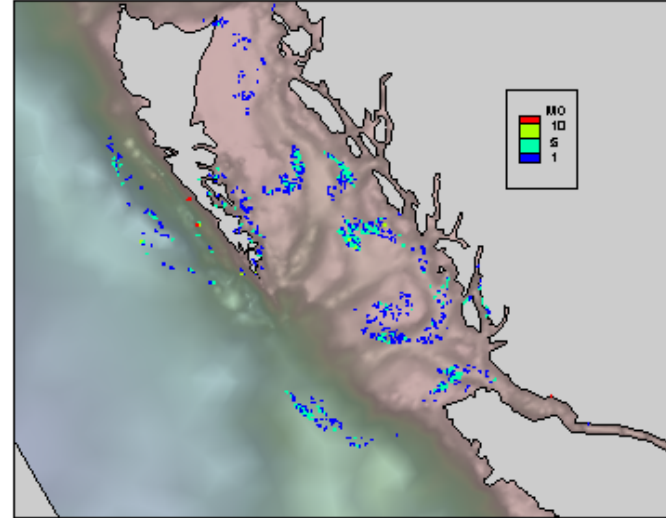
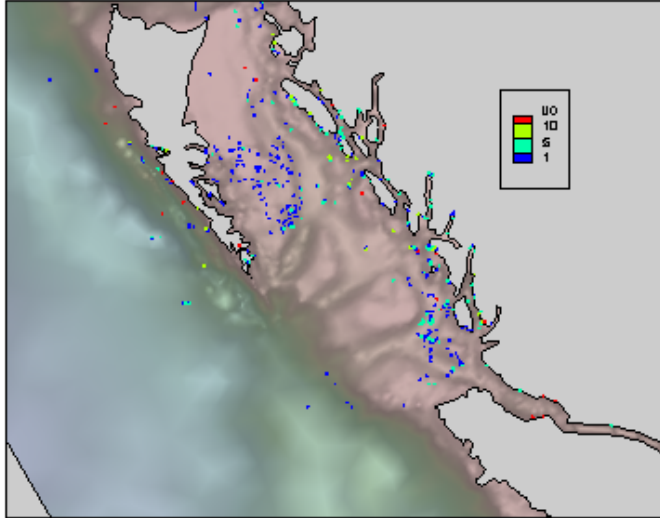
Presentation

Feb



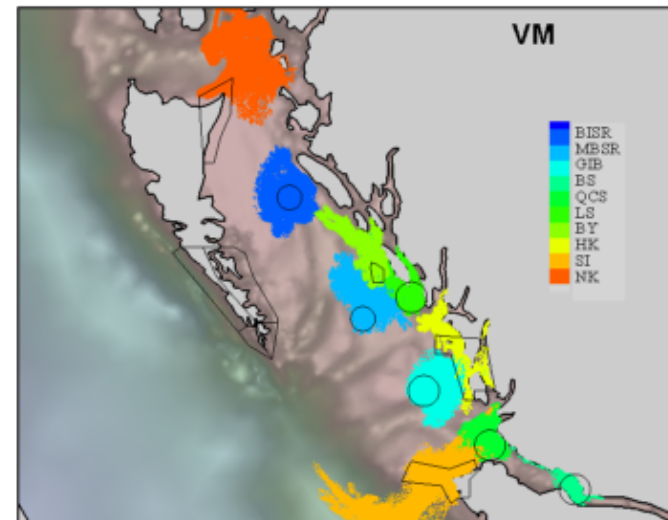
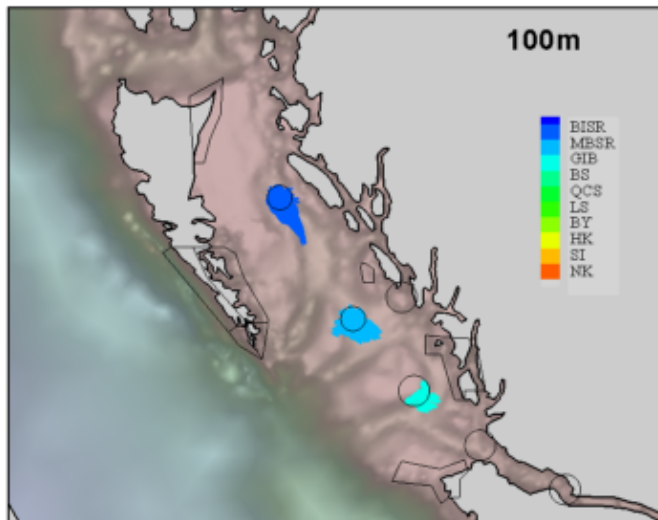
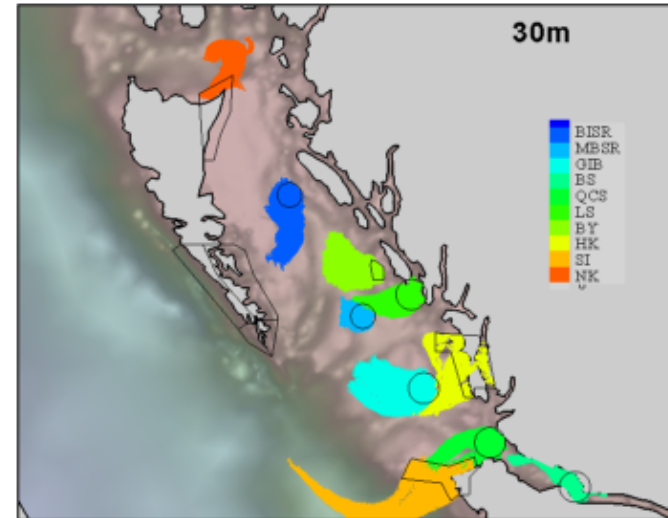
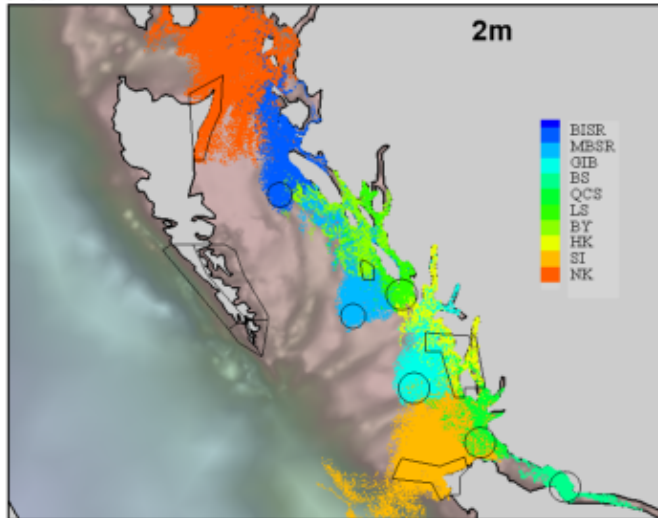
Presentation

Feb Off Shore



Presentation

Feb



Presentation

